



(↑ Factory building)

About US

A high-tech enterprise with more than 14 years experience.

RMB 10 million registered capital, 10600m² construction area.

12 utility model patents & 1 invention patent.

Own mould center, leading by the mould master who once worked at Foxconn in Shenzhen.

Advanced processing equipment and facilities for automatic production.

30+million items of different specifications and models in stock.

ISO9001,MSDS,SGS,ROHS,REACH certification.

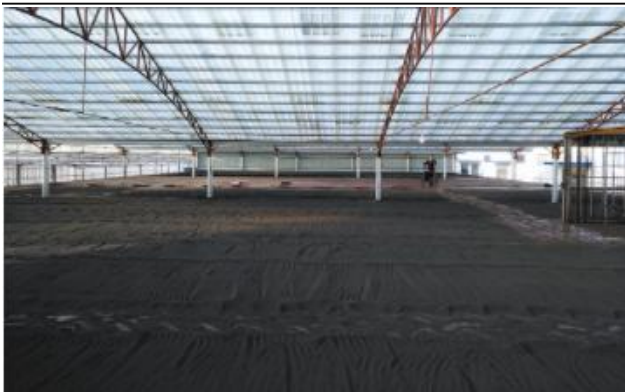
Contact: Lynn Chen

Email: sales02@ybcc88.com

Tel.(WhatsApp & WeChat): +86 19313257189

Website: www.ybcc88.en.alibaba.com / www.ybmagnet.com

(↓ Machinery & equipment)



(↓ Packaging & delivery)



(↓ Certificate: ISO9001 、 SGS 、 MSDS 、 ROHS、 REACH)



(↓ Team activities)

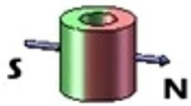



Our products:

1. Ferrite Magnet Rotor	2. Ferrite Magnet Rotor with Impeller (Cooler pump magnet)
3. Isotropic Ferrite Magnet	4. Anisotropic Ferrite Magnet
5. Neodymium Magnet	6. Whiteboard magnet
7. Teaching magnet	

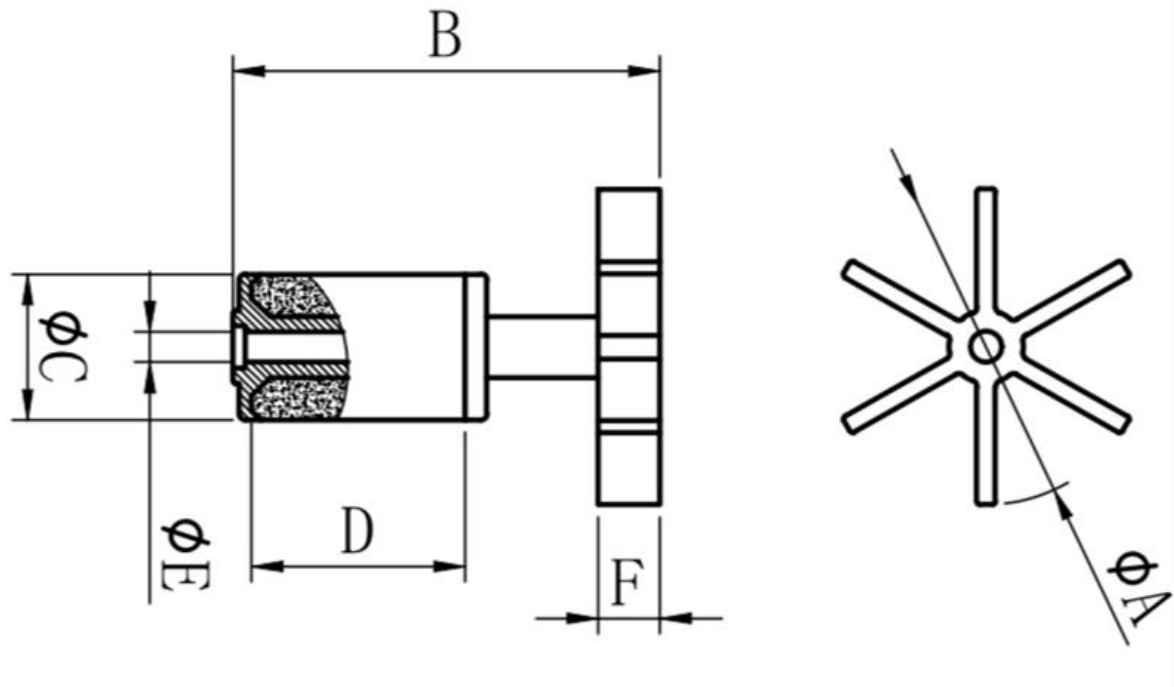
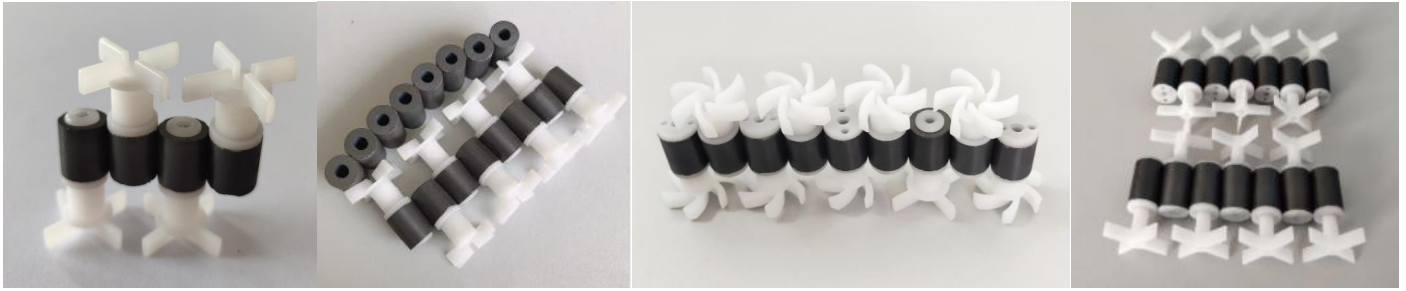
1.Ferrite Magnet Rotor—Unmoulded



Size(mm)	Outside Diameter (mm)	Inside diameter (mm)	Height(mm)	Direction of magnetization (mm)	Pole
9*10mm	9	3.5-3.8	10	 <p>Diametrical</p>	2-poles
9*10.5mm	9	3.5-3.8	10.5		2-poles
9*15mm	9	3.5-3.8	15		2-poles
9*16mm	9	3.5-3.8	16		2-poles
10.5*16mm	10.5	3.5-3.8	16		2-poles
12*12mm	12	4.2-5.0	12		2-poles
12*18mm	12	4.2-5.0	18		2-poles
12*20mm	12	4.2-5.0	20		2-poles
12*22mm	12	4.5-5.5	22		2-poles
13.5*21mm	13.5	4.2-5.0	21		2-poles
13.5*24mm	13.5	4.2-5.0	24		2-poles
14*20mm	14	4.2-5.0	20		2-poles
14*25mm	14	4.2-5.0	25		2-poles
15*25mm	15	4.2-5.0	25		2-poles
15*30mm	15	4.2-5.0	30		2-poles
16*25mm	16	4.8-5.8	25		2-poles
16*28mm	16	4.8-5.8	28		2-poles
16*30mm	16	4.8-5.8	30		2-poles
18*30mm	18	5.4-6.4	30		2-poles
18.3*35mm	18.3	5.4-6.4	35		2-poles
18.5*35mm	18.5	5.4-6.4	35		2-poles
19*30mm	19	5.4-6.4	30	2-poles	
19*38mm	19	5.4-6.4	38	2-poles	
20*38mm	20	5.4-6.4	38	2-poles	
21*35mm	21	7.9-9.0	35	2-poles	
12.4*25mm	12.4	4.2-5.0	25	 <p>Diametrically Magnetized</p>	4-poles
20.4*28mm	20.4		28		4-poles
27*50mm	27		50		4-poles
38.3*40mm	38.3		40		4-poles
42*74mm	42		74		4-poles

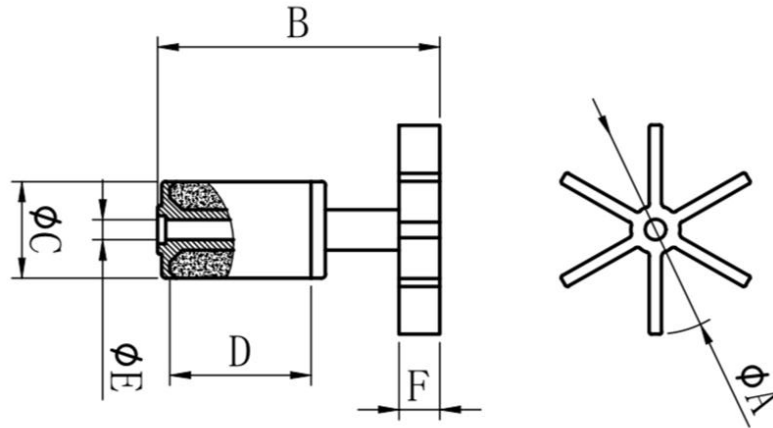
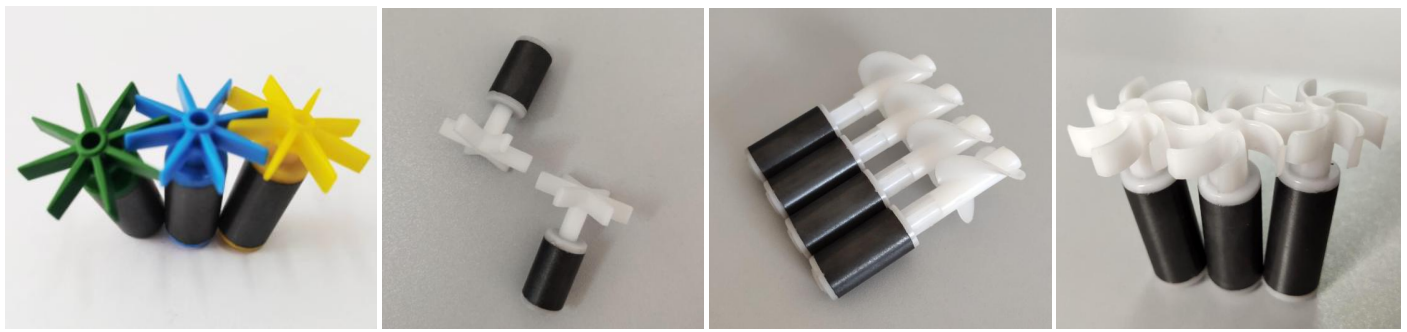
2.Ferrite Magnet Rotor with Impeller (Cooler pump magnet/fan magnet)

(9.10 series)



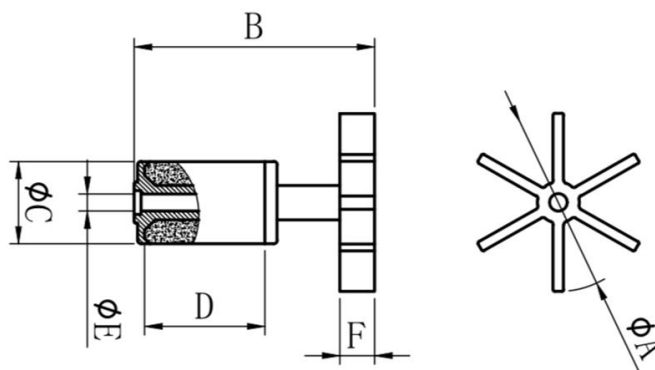
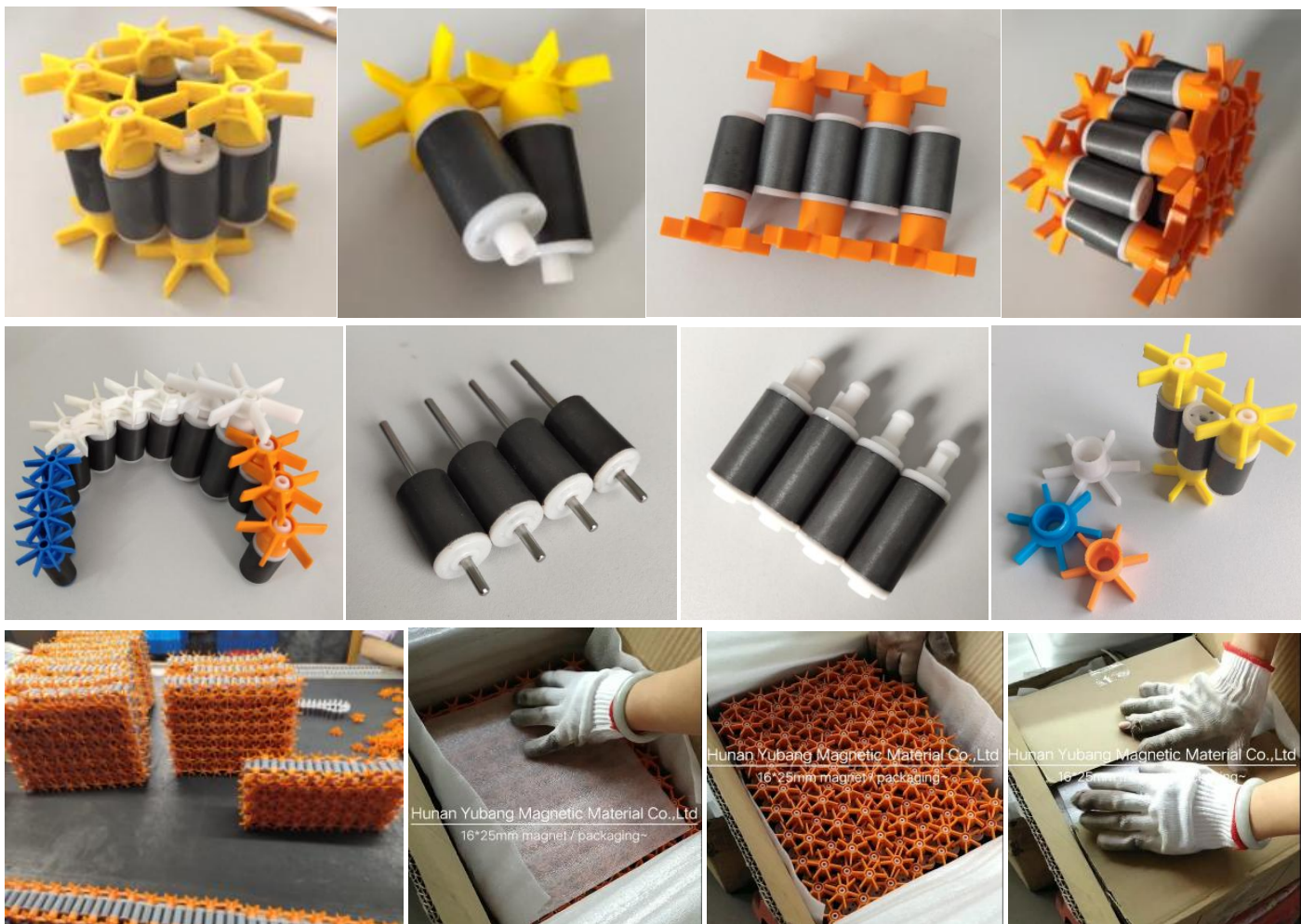
Size	A	B	C	D	E	F	No. of impeller	Type of blade
9*10.5mm	12.0	22.8	9	10.5	2.06	4.0	4	Straight blade
	15.0	23.0	9	10.5	2.05	4.3	4	Straight blade
	17.5	23.0	9	10.5	2.05	4.3	4	Straight blade
	19.0	24.2	9	10.5	2.05	4.0	4	Straight blade
	19.2	24.3	9	10.5	1.95	4.0	4	Straight blade
	13.5	21.2	9	10.5	2.05	3.5	4	Helical blade
	16.5	22.2	9	10.5	2.05	4.5	4	Helical blade
	16.5	22.8/23.0	9	10.5	2.05	4.0/3.65	6	Helical blade
9*15mm	16.5	26.9	9	15.0	1.95	5.0	3	Straight blade
	18.0	27.5	9	15.0	2.05	5.0	3	Straight blade
	20.5	27.5	9	15.0	2.05	5.0	3	Straight blade
	21.0	27.5	9	15.0	2.05	5.0	3	Straight blade
	22.0	28.0	9	15.0	1.95	5.0	3	Straight blade
	23.0	27.5	9	15.0	2.05	5.0	3	Straight blade
	21.0	27.0	9	15.0	1.95	5.0	4	Straight blade
	10.5*16mm	23.0	30.95	10.5	16.0	1.9	4.55	4

(12.13.14 series)



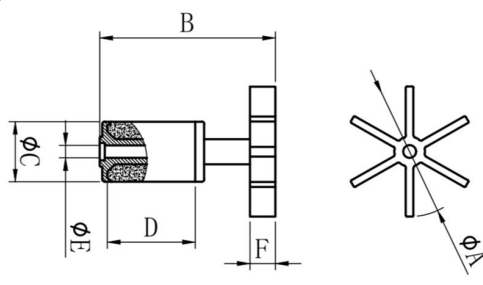
Size	A	B	C	D	E	F	No. of impeller	Type of blade
12*18mm	18.0/20.0/23.0	47.0	12	18	2.40	4.0	6	Straight blade
	25.0	50.8	12	18	2.40	6.5	6	Straight blade
	26.0	36.1	12	18	2.30	5.0	6	Straight blade
	24.8	59.5	12	18	3.0		2	Helical blade
	28.4	59.5	12	18	3.0		2	Helical blade
	24.5/27.0	36.0	12	18	2.50	5.0	6	Straight blade
	27.5	36.0	12	18	2.50	4.9	6	Straight blade
12*18mm with shaft		44.9	12	18	2.50			
12*20mm	21.5	34.0	12	20	2.40	5.0	6	Straight blade
	26.8	43.8	12	20	2.50	6.8	6	Straight blade
12*22mm	22.0	33.7	12	22	1.92	3.15	8	Straight blade
	22.9	35.5	12	22	1.92	3.60	8	Straight blade
	25.3	33.9	12	22	1.92	4.15	8	Straight blade
	26.5	36.2	12	22	1.92	3.60	8	Straight blade
	26.6	35.4	12	22	1.92	3.9	8	Straight blade
	25.0	33.9	12	22	1.92	3.8	8	Straight blade
	25.6	33.8	12	22	1.92	3.5	8	Straight blade
13.5*21mm with shaft		55.5	13.5	21	2.50			
13.5*21mm	26.5/28.5	39.6	13.5	21	2.50	5.5	6	Straight blade
13.5*24mm	25.0	43.3	13.5	24	2.50	4.5	6	Straight blade
	29.3	43.3/50.5	13.5	24	2.50	5.5/6.0	6	Straight blade
	21.0	42.2	13.5	24	2.50	4.5	6	Straight blade
	30.6	36.0	13.5	24	1.92	4.10	6	Straight blade
14*25mm	31.0	41.8	14	25	2.50	5.5	6	Straight blade
15*28mm	30.0/35.0	46.5/47.5	15	28	3.0	5.0/6.0	6	Straight blade
	31.2	72.5	15	28	3.0		2	Helical blade

(16 series)



Size	A	B	C	D	E	F	No. of impeller	Type of blade
16*25mm	32.5/36.5	45.8	16	25	2.5	5.5	6	Straight blade
	36.5	46.8	16	25	3.0	6.5	6	Straight blade
	35.0	45.5	16	25	2.5	5.4	6	Straight blade
	30.5/32/35/35.3	44.0	16	25	3.0	5.3/6.0	6	Straight blade
	34.0/35.0	43.8	16	25	2.55	6.0	6	Straight blade
	37.0	47.0	16	25	3.0	5.3	6	Straight blade
	31.5/33.5/35.3	45.0	16	25	3.0	5.5/5.3	6	Straight blade
	36/38	45.0	16	25	3.0	5.3	6	Straight blade
16*28mm	30.0/35.0/37.0	45.2	16	28	3.0	6.5/6.9	6	Straight blade
16*30mm	39.9	52.5	16	30	2.5	5.6	6	Straight blade
	41.5	53.5	16	30	2.53	5.5	6	Straight blade

(18.19.20.21 series)



Size	A	B	C	D	E	F	No. of impeller	Type of blade
18*30mm	40.5/41.5	51.1	18	30	3.0	6.0	6	Straight blade
18.3*35mm	34.8/35/36/37/38/ 40.8/41.5/42/45	60.9	18.3	35	3.52	6.4	6	Straight blade
	40.8/45.0	58.0	18.3	35	3.50	6.5	6	Straight blade
	37.0/39.6/42.5	60.3	18.3	35	3.0	6.5/6.2/6.1	6	Straight blade
18.5*35mm	40/40.5/43/45/46	59.0	18.5	35	3.5	6.6	6	Straight blade
18.5*42mm	40/40.5/43/45/46	63.0	18.5	42	3.5	6.6	6	Straight blade
19*20mm	30.5	39.7	19.0	20	3.0	5.7	6	Straight blade
19*30mm	36.0	54.8	19	30	3.0	6.0	6	Straight blade
19*38mm	42.0	67.2	19	38	3.0	8.0	6	Straight blade
	40/40.5/43/45/46	57.8	19	38	3.5	6.6	6	Straight blade
	36/37/38.5/40.5/43/45	60.7	19	38	3.5	6.3	6	Straight blade
20*38mm	33.5/38/43.5	94.0	20	38		8.0	6	Straight blade
20*43mm	40/40.5/43/45/46	65.2	20	43	3.5	7.2	6	Straight blade
21*32mm	38.3	63.0	21	32	4.0	7.2	6	Straight blade

Application:



3.1 Isotropic Ferrite Magnet—Flat / disc. Axial magnetization



Size(mm)	Type	Diameter(mm)	Thickness(mm)	Material grade
D5*2-5	disc	5	2-5	Y10T
D6*2-5	disc	6	2-5	Y10T
D8*2-5	disc	8	2-5	Y10T
D10*2-5	disc	10	2-5	Y10T
D12*3-5	disc	12	2-5	Y10T
D15*3-5	disc	15	2-5	Y10T
D16*3-5	disc	16	2-5	Y10T
D17*3-5	disc	17	2-5	Y10T
D17.5*3-5	disc	17.5	2-5	Y10T
D18*3-6	disc	18	3-6	Y10T
D19*3-6	disc	19	3-6	Y10T
D25*3-6	disc	25	3-6	Y10T
D30*3-6	disc	30	3-6	Y10T

3.2 Isotropic Ferrite Magnet—Disc, dot in one side. Axial magnetization or Multipole magnetization

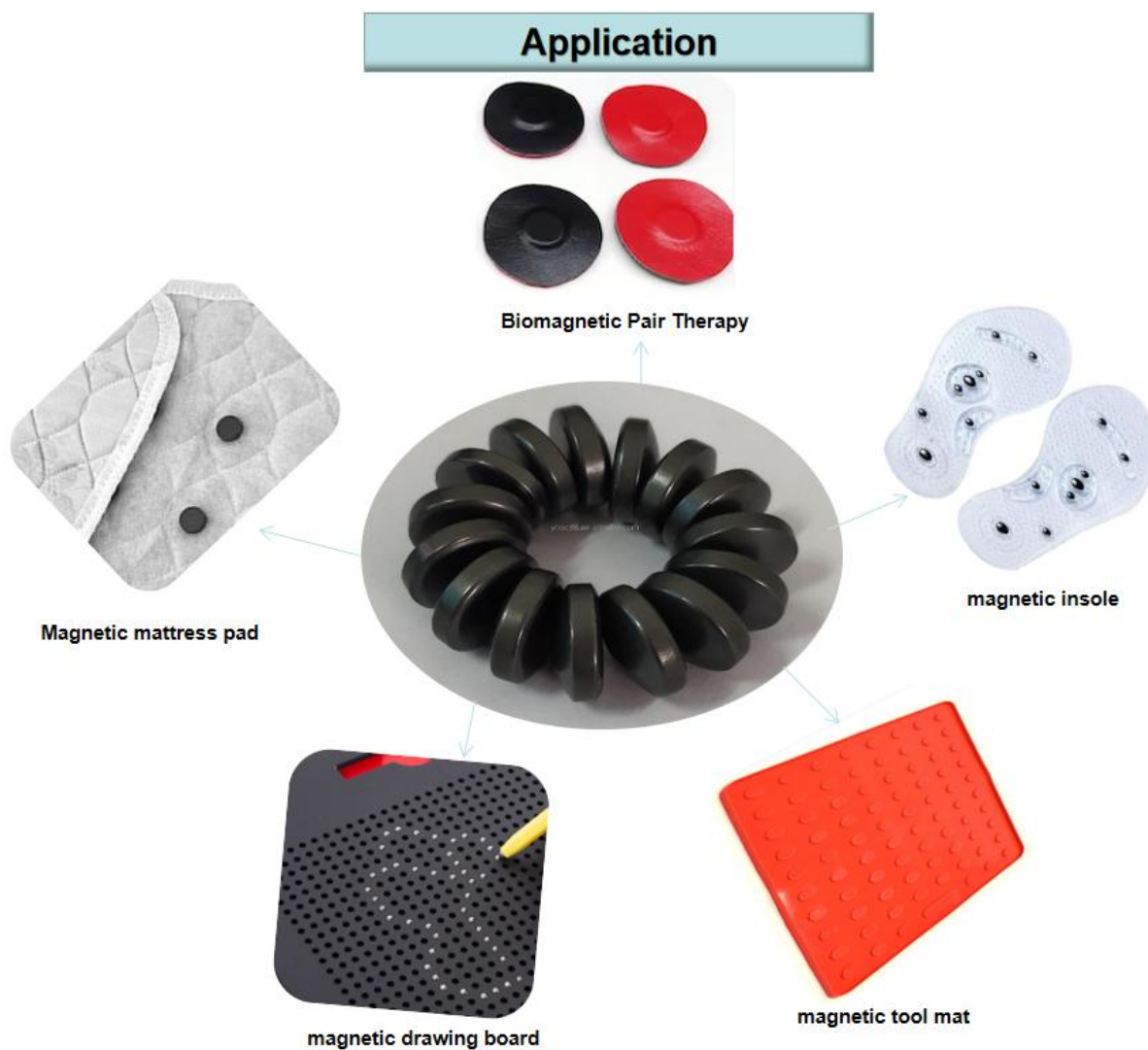


Size(mm)	Type	Diameter(mm)	Thickness(mm)	Material grade
D12*3-6	disc with dotted mark	12	3-5	Y10T
D17.1*3-5	disc with dotted mark	17.1	3-5	Y10T
D17.6*3-5	disc with dotted mark	17.6	3-5	Y10T
D24*3-6	disc with dotted mark	24	3-6	Y10T
D25*3-6	disc with dotted mark	25	3-6	Y10T

3.3 Isotropic Ferrite Magnet—Round top,can be polished



Size(mm)	Type	Diameter(mm)	Thickness(mm)	Material grade
D5*2	round top	5	2	Y10T
D11.5*3-4	round top	11.5	3	Y10T
D10*3-6	round top	10	3	Y10T
D11*3-6	round top	11	3	Y10T
D12*3	round top	12	3	Y10T
D12*4	round top	12	4	Y10T
D15*4	round top	15	4	Y10T
D15*5	round top	15	5	Y10T
D15*6	round top	15	6	Y10T

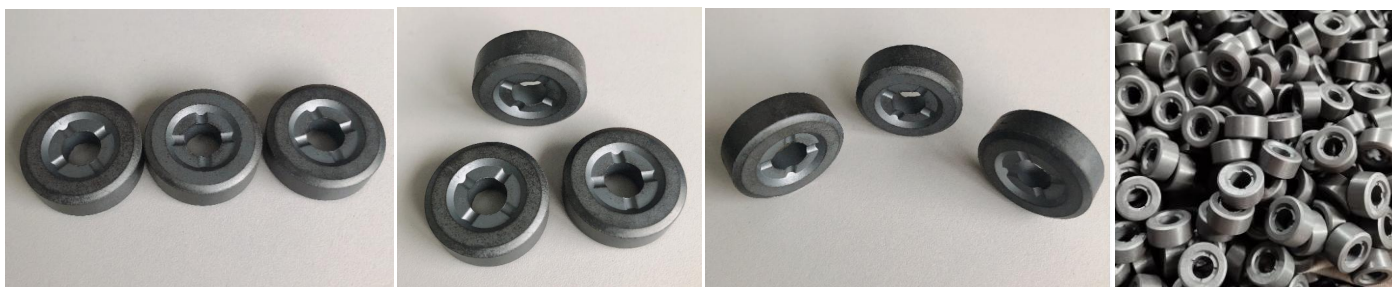


3.4 Isotropic Ferrite Magnet—Block



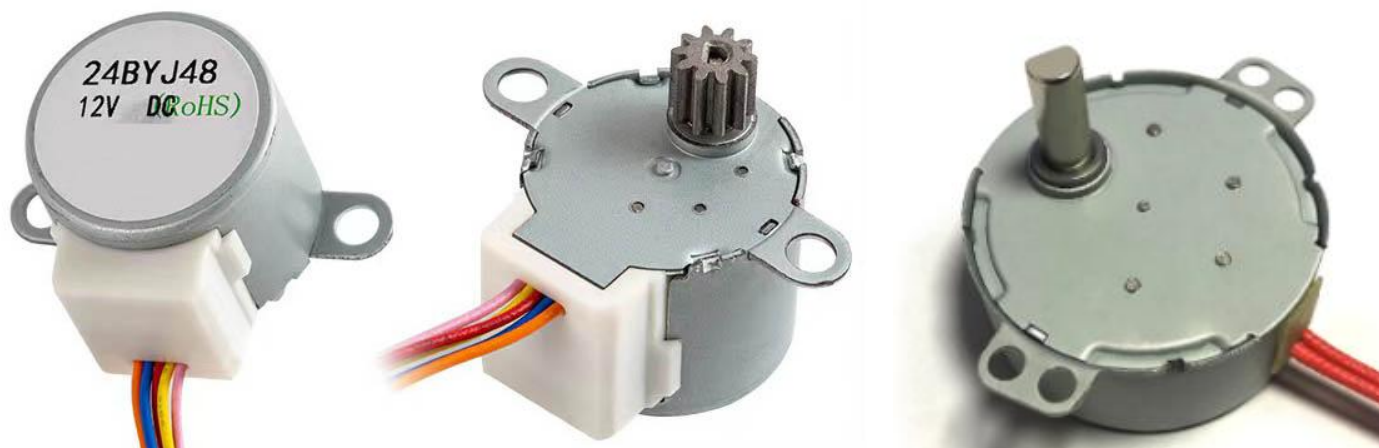
Size(mm)	Type	Length(mm)	Width(mm)	Thickness(mm)	Material grade
20*5*5	Block	20	5	5	Y10T
30*16*5	Block	30	16	5	Y10T
30*19*6	Block	30	19	6	Y10T

3.5 Isotropic Ferrite Magnet Rotor



Size(mm)	Type	Outer Diameter(mm)	Inner diameter(mm)	Thickness(mm)	Material grade
D18*d6*6mm	Ring	18	6	6	Y10T
D18*d6*8mm	Ring	18	6	8	Y10T
D18*d6*9mm	Ring	18	6	9	Y10T
D18*d8*6mm	Ring	18	8	6	Y10T
D18*d8*9mm	Ring	18	8	9	Y10T
D25*d8*8mm	Ring	25	8	8	Y10T
D25*d8*9mm	Ring	25	8	9	Y10T

Application: Synchronous motor



4.1 Anisotropic Ferrite Magnets—Flat / disc. Axial magnetization or Multipole magnetization



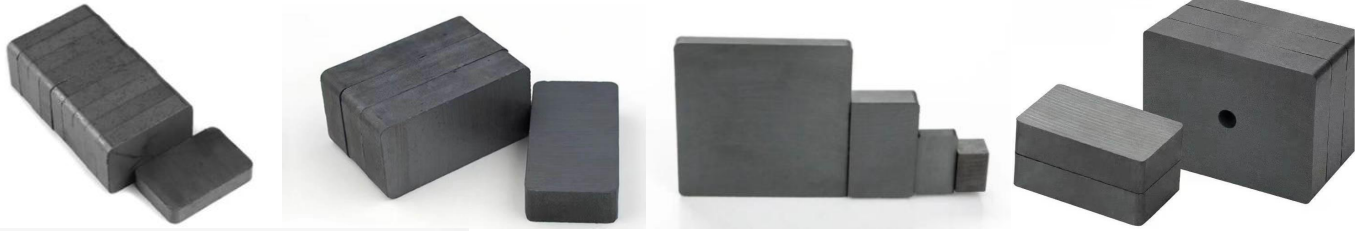
Size(mm)	Type	Diameter(mm)	Thickness(mm)	Material grade
D8*2-8	disc	8	3	Y30/Y30BH/Y35
D10*2-8	disc	10	3	Y30/Y30BH/Y35
D12*2-8	disc	12	3	Y30/Y30BH/Y35
D12.5*3.8	disc	12.5	3.8	Y30/Y30BH/Y35
D15*2-15	disc	15	2	Y30/Y30BH/Y35
D18*2-10	disc	18	3	Y30/Y30BH/Y35
D20*3-15	disc	20	3	Y30/Y30BH/Y35
D25*3-10	disc	25	3	Y30/Y30BH/Y35
D30*3-8	disc	30	3	Y30/Y30BH/Y35

4.2 Anisotropic Ferrite Magnets—Round top



Size(mm)	Type	Diameter(mm)	Thickness(mm)	Material grade
15*6	round top	15	6	Y30BH/Y35
20*10	round top	20	10	Y30BH/Y35
20*13	round top	20	13	Y30BH/Y35

4.3 Anisotropic Ferrite Magnets—Block



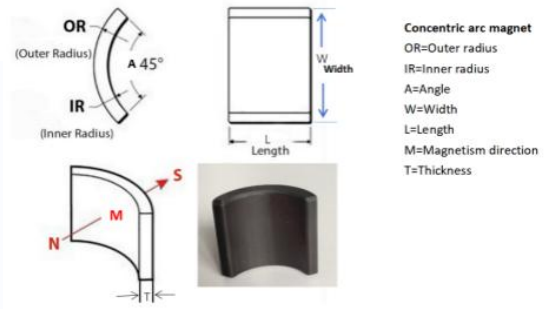
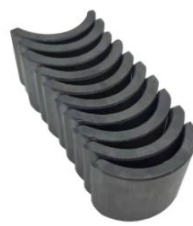
Size(mm)	Type	Length(mm)	Width(mm)	Thickness(mm)	Material grade
10*10*4	Block	10	10	4	Y25/Y30/Y30BH/Y35
12*12*4	Block	12	12	4	Y25/Y30/Y30BH/Y35
14*8*4-6	Block	15	6	4	Y25/Y30/Y30BH/Y35
15*13*5	Block	15	13	5	Y25/Y30/Y30BH/Y35
18*13*6	Block	18	13	6	Y25/Y30/Y30BH/Y35
20*10*6	Block	20	10	6	Y25/Y30/Y30BH/Y35
20*12*6	Block	20	12	6	Y25/Y30/Y30BH/Y35
25*10*6	Block	25	10	6	Y25/Y30/Y30BH/Y35
25*11*6	Block	25	11	6	Y25/Y30/Y30BH/Y35
25*20*6	Block	25	20	6	Y25/Y30/Y30BH/Y35
25*20*8	Block	25	20	8	Y25/Y30/Y30BH/Y35
28*18*13	Block	28	18	13	Y25/Y30/Y30BH/Y35
29*13*7	Block	29	13	7	Y25/Y30/Y30BH/Y35
30*10*5	Block	30	10	5	Y25/Y30/Y30BH/Y35
30*20*6	Block	30	20	6	Y25/Y30/Y30BH/Y35
30*20*8	Block	30	20	8	Y25/Y30/Y30BH/Y35
32*16*16	Block	32	16	16	Y25/Y30/Y30BH/Y35
40*20*6	Block	40	20	6	Y25/Y30/Y30BH/Y35
40*20*10	Block	40	20	10	Y25/Y30/Y30BH/Y35
40*25*10	Block	40	25	10	Y25/Y30/Y30BH/Y35
50*25*5-20	Block	50	25	5-20	Y25/Y30/Y30BH/Y35
150*50*25	Block	150	50	25	Y25/Y30/Y30BH/Y35
150*75*30	Block	150	75	30	Y25/Y30/Y30BH/Y35
150*100*25	Block	150	100	25	Y25/Y30/Y30BH/Y35

4.4 Anisotropic Ferrite Magnets—Ring, speaker magnet



Size(mm)	Type	Outer Diameter(mm)	Inner diameter(mm)	Thickness(mm)	Material grade
30*18*5	Ring	30	18	5	Y25/Y30/Y30BH/Y35
32*16*6	Ring	32	16	6	Y25/Y30/Y30BH/Y35
32*18*4	Ring	32	18	4	Y25/Y30/Y30BH/Y35
35*18*6	Ring	35	18	6	Y25/Y30/Y30BH/Y35
36*18*5	Ring	36	18	5	Y25/Y30/Y30BH/Y35
39*22*6	Ring	39	22	6	Y25/Y30/Y30BH/Y35
40*19*6	Ring	40	19	6	Y25/Y30/Y30BH/Y35
40*22*6	Ring	40	22	6	Y25/Y30/Y30BH/Y35
45*19*4	Ring	45	19	4	Y25/Y30/Y30BH/Y35
45*22*5	Ring	45	22	5	Y25/Y30/Y30BH/Y35
45*25*18	Ring	45	25	18	Y25/Y30/Y30BH/Y35
50*19*10	Ring	50	19	10	Y25/Y30/Y30BH/Y35
50*22*8	Ring	50	22	8	Y25/Y30/Y30BH/Y35
50*25*6	Ring	50	25	6	Y25/Y30/Y30BH/Y35
50*29*18	Ring	50	29	18	Y25/Y30/Y30BH/Y35
55*25*7	Ring	55	25	7	Y25/Y30/Y30BH/Y35
60*24*12	Ring	60	24	12	Y25/Y30/Y30BH/Y35
60*32*6	Ring	60	32	6	Y25/Y30/Y30BH/Y35
70*25*10	Ring	70	25	10	Y25/Y30/Y30BH/Y35
70*32*8	Ring	70	32	8	Y25/Y30/Y30BH/Y35
80*32*10	Ring	80	32	10	Y25/Y30/Y30BH/Y35
80*40*8	Ring	80	40	8	Y25/Y30/Y30BH/Y35
90*36*15	Ring	90	36	15	Y25/Y30/Y30BH/Y35
90*40*15	Ring	90	40	15	Y25/Y30/Y30BH/Y35
90*45*13	Ring	90	45	13	Y25/Y30/Y30BH/Y35
100*45*13	Ring	100	45	13	Y25/Y30/Y30BH/Y35
100*60*20	Ring	100	60	20	Y25/Y30/Y30BH/Y35
110*60*20	Ring	110	60	20	Y25/Y30/Y30BH/Y35
120*60*20	Ring	120	60	20	Y25/Y30/Y30BH/Y35
134*60*20	Ring	134	60	20	Y25/Y30/Y30BH/Y35
156*60*20	Ring	156	60	20	Y25/Y30/Y30BH/Y35
180*85*20	Ring	180	85	20	Y25/Y30/Y30BH/Y35
190*90*25	Ring	190	90	25	Y25/Y30/Y30BH/Y35
220*110*25	Ring	220	110	25	Y25/Y30/Y30BH/Y35
280*140*25	Ring	280	140	25	Y25/Y30/Y30BH/Y35

4.5 Anisotropic Ferrite Magnets—Arc / segment, motor magnet



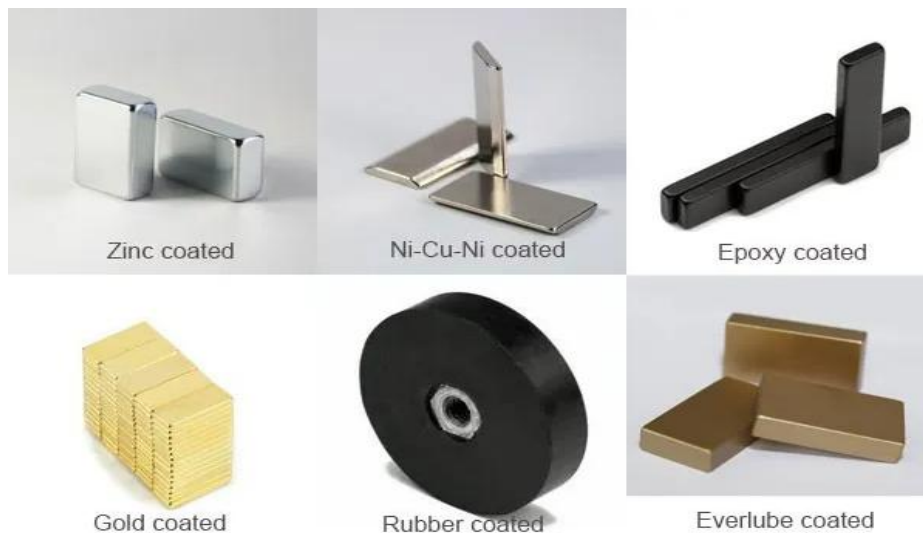
Item No.	OR(mm)	IR(mm)	Width(mm)	Length(mm)	Thickness(mm)	Arch height(mm)
YB-ARC-01	13.1	8.9/9.55	22.6	27.5/48.5	4.25	4.7
YB-ARC-02	15.35	12.35	27	14.5	3.5	10.3
YB-ARC-03	16.9	12/13.15	30	27/37/44	4.95/4.25	11.9/12
YB-ARC-04	19.8	14.8	35	30/35/40	5.5	14
YB-ARC-05	21	14.8	35	40	6.2	15
YB-ARC-06	22	15.9	40.5	48	7.12	15.8
YB-ARC-07	23/23.4/23.7	17.5/18.4/18.5	34.8/40/57	40/51/57	5/6.2/7.12	15.16/16.5/18.5
YB-ARC-08	27.5	20.5	46	75	7.12	18.5
YB-ARC-09	28	20.95/21.4	49/50	43/45	6.55/6.5	18.75/19
YB-ARC-10	29	22.5/23.5	53/52.5	40/45/50	6.35/6.5	21.5/20/21
YB-ARC-11	30.5	23.5	55/57	40/50/65	7	21.8/23.5
YB-ARC-12	31	23.5/24	54.5/57	30/40/60/70	7.5	21/24
YB-ARC-13	32	29.5	58.5	40	6.5	22.2
YB-ARC-14	32.5	28.5	59.5	39	6.7	23
YB-ARC-15	33	26	58	26	6.5	21.1
YB-ARC-16	35.5	25.7/27.0/31.3	62.2/62/63	35/40/45/50/55/60	9.8/8.5/9.1	24.5/25
YB-ARC-17	35.7	28.0/29.5	63	50/70	7.5/6.2	25.2/24
YB-ARC-18	36	28/32	64	86	9	25.5
YB-ARC-19	37	26.6/27.1/30.5	64.65/67.2/64	60/85/90/100/110	10.4/10.3	27/25.8
YB-ARC-20	38.2	68.5	31.0	80	7.5	8.9
YB-ARC-21	39	33	54.5	24	6	15.2
YB-ARC-22	40	28.2/28.5	70	70/65/90	12	29
YB-ARC-23	41.5	36	53.2	18	5.5	13.47
YB-ARC-24	42.35	33.15	78.4	70/85	9.2	29.5
YB-ARC-25	43	36	40	25	7	10
YB-ARC-26	46.5	33.2/33.5/ 36.65/39.1	84.4/80/84.5	65/70/75/ 80/90/95	13.3/13.5/ 13.35/10.9	33.9/33/ 34.5/31.3
YB-ARC-27	47.5	33.2/40.75	86.3/50	80/95/85	14.3/6.75	34.9/12.5
YB-ARC-28	48	41.2/41.8	57.5/50	35/19.3/26	6.8/6.2/7.2	14.3/12.45/13.45
YB-ARC-29	53.75	43.75	62	88	10	18.2
YB-ARC-30	54.85	40.6	102	80	14.2	39.2
YB-ARC-32	66.5	60.5	72.3	35	6	15.9
YB-ARC-33	78	69.5	78.1	25	8.5	17.74
YB-ARC-34	104.5	96.5	64	26	8	12.46

5. Sintered Neodymium Magnet



Size (mm)	Shape	Ourside Diameter / Length (mm)	Inside diameter / Width (mm)	Thickness (mm)
D3*1-3	Disc	3		1.5-10
D4*1-10	Disc	4		1.5-10
D6*1-10	Disc	6		1.5-10
D8*1-10	Disc	8		1.5-10
D9*1-10	Disc	9.5		1.5-10
D10*1.5-10	Disc	10		1.5-10
D12*1.5-10	Disc	12		1.5-10
D5.8*7*3	Ring	5.8	7	3
D22*6*10	Ring	22	6	10
D29*6*10	Ring	29	6	10
40*15*5	Block	40	15	5
40*20*2	Block	40	20	2
40*20*10	Block	40	20	10
40*25*15	Block	40	25	15
50*10*3	Block	50	10	3
50*40*5	Block	50	40	5
65*10*10	Block	65	10	10
100*10*5	Block	100	10	5

Other sizes and shapes can be customized. Available coating: Zinc,Ni-Cu-Ni,Epoxy,Gold,Rubber,Everlube,etc.



Zinc coated

Ni-Cu-Ni coated

Epoxy coated

Gold coated


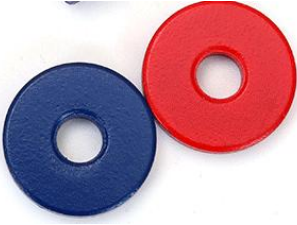
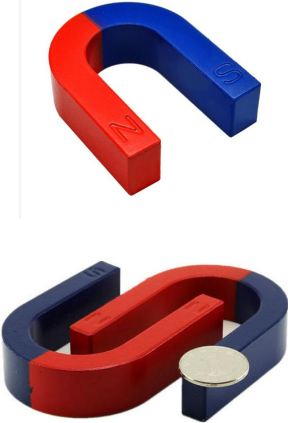
Rubber coated

Everlube coated

6. Whiteboard Magnet

Picture	Shape	Size	Color	Material	Package
	Round top	1.5CM 2CM 3CM 4CM	Red,yellow, blue,green, pink,orange, black,white	Plastic+ Ferrite Magnet	1.5CM(800pcs/bag) 2CM(500pcs/bag) 3CM(200pcs/bag) 4CM(100pcs/bag)
	Flat / disc	1CM 1.2CM 1.5CM 2CM 3CM 4CM	Red,yellow, blue,green, pink,orange, black,white	Plastic+ Ferrite Magnet	1CM(500pcs/bag) 1.2CM(500pcs/bag) 1.5CM(500pcs/bag) 2CM(200pcs/bag) 3CM(80pcs/bag) 4CM(70pcs/bag)
	Flat,with edge	2.1CM 3.1CM	Red,yellow, blue,green, pink,orange, black,white	Plastic+ Ferrite Magnet	2.1CM(200pcs/bag) 3.1CM(80pcs/bag)
	Transparent disc	2CM 3CM 4CM	Red,yellow, blue,green, pink,orange, black,white	Plastic+ Neodymium Magnet	2CM(500pcs/bag) 3CM(100pcs/bag) 4CM(70pcs/bag)
	Push pin	11*16.5mm 15*20mm	Red,yellow, blue,green, white	Plastic+ Neodymium Magnet	11mm(150pcs/canister) 15mm(60pcs/canister)
	Chess shape	15*20mm 20*30mm	Red,yellow, blue,green, white	Plastic+ Neodymium Magnet	15mm(8pcs/paperboard) 20mm(4pcs/paperboard)
Other type					
Package Methods					

7. Teaching Magnet

Picture	Shape	Size(mm)	Material	Package (PCS/carton)	Weight (Kg/carton)
	Bar	30*6*4	Ferrite magnet	10000	32.5
		37*9*6		3000	26
		40*10*4		4000	28
		50*15*4		2000	26
		60*15*5		1000	20
		70*12*7		1000	26
		80*14*7.5		700	27
		100*20*6.5		500	30
		120*22*10		200	23
		150*18*9		192	21
170*20*10	120	18			
	Ring	16*7*3	Ferrite magnet	10000	
		16*7*5		8000	30
		20*7*4		5000	25
		24*10*5		4000	32
		30*18*5		2000	20
		32*18*6		2000	27
		36*18*6		1000	22
	U	22*20*6*4	Ferrite magnet	5000	24
		25*25*7*5		3000	30
		30*30*8*6		2000	20
		40*36*8*6		1000	20
		42*38*9*7.5		1000	21
		50*38*10*8		500	21
		60*52*12*9		320	24
		70*50*12*12		200	17
		80*60*10*20		144	19
		95*63*10*17		120	20
		105*86*20*30		30	18

Contact us:

[HUNAN YUBANG MAGNETIC MATERIAL CO.,LTD.](http://www.ybcc88.com)

Add.: Small and medium-sized Enterprise Entrepreneurship Park, Yanling, Zhuzhou, Hunan, China

Contact: Lynn Chen

Tel. (WhatsApp & WeChat): +86 19313257189

Fax: 0086 73126287267

Email: sales02@ybcc88.com

Website: www.ybcc88.en.alibaba.com / www.ybmagnet.com